

## TRU-GARD™ MAKING WORKPLACES SAFER – AUTUMN 2022

We've got loads of projects keeping us busy just now. It's great to see so many businesses prioritising workplace safety and including provisions in building planning for the protection of personnel and property. Despite the logistical challenges of shipping goods in the current market, especially to off-shore regions, we are finding ways to keep the supply chain going and creating every little efficiency we can to help shorten the process and reduce the pain points caused by freight. Good processes and steady output keep us ahead of the game in what continues to be unusual and challenging times, and we're thrilled with what we're able to achieve with Tru-Gard™ every day! Check out the latest news from Tru-Bilt Industries!

### Popularity growth for Tru-Gard™ access gates – a spike in demand keeps us busy!

Standard-size personnel gates have been a valued part of the Tru-Gard™ range for many years now, but recent design tweaks and style variations have resulted in unprecedented demand for these handy fixtures. Last year we developed an alternative option in the form of a telescopic gate with adjustable length that can extend to fully cover the maximum space and create the perfect width for your requirements. These have also been made available as double gates with latches so you can make your access point large enough for vehicles, trolleys and pallets.

Now you can choose from the standard Tru-Gard™ Personnel Gate at a fixed width of 1010mmW, or adjust anywhere from 800mmW to 1400mmW using the single Tru-Gard™ Telescopic Gate, achieving up to 2800mmW with Tru-Gard™ Double Telescopic Gates. Having made these new options available, we're now experiencing a surge in orders with many clients upgrading their pedestrian safety areas and making access easier in heavy traffic zones. Here's an example of a recent installation at a Canterbury meat processing factory, providing access galore!



## Tru-Gard™ Hand Rail the perfect choice for safeguarding dangerous drops!

We were thrilled to be part of this new-build freight depot in our own neck of the woods. This large truck yard was constructed in a picturesque rural setting near Dunedin, with heavy-duty retaining walls built around the excavated ground. A walkway forged around the perimeter created the need for height safety precautions to prevent nasty falls from the 3 metre drop. Tru-Gard™ Hand Rail was the perfect solution for this requirement. This light-weight barrier has a small footprint so it's simple to apply to the narrow concrete base, its strength is certified to withstand human weight, and the high-visibility yellow is a cautionary signal to pedestrians, indicating the reason for the barrier.

Find out more about [Tru-Gard™ Hand Rail](#).



## Have you seen our powder-coating in action? It's all automated now and super quick!

Last year we told you about our new powder-coating machinery. It took us some time to fully learn the ropes and create our optimum technique for maximum efficiency and the highest possible quality finish. With lots of practice under our belt, we've become experts in the field and very pleased with the new procedure.

We've got our systems automated now and everything runs like clockwork. There's a continuous chain running at approximately 850mm/minute taking barrier rails through in sets of three. It takes a couple of hours for a set to move through the process from start to finish, including coating with coloured powder and baking it on in the oven. At maximum capacity, we can complete around 120 barrier rails per 8 hour shift. And depending on the orders going out the door, we can easily switch to coating bollards, hand rail posts or personnel gates instead. Each product requiring only minor tweaks to the chain speed, application and cook time.

This investment has added unprecedented efficiency to our production process and we're thrilled with the results! Check out our video of the powder guns putting safety-yellow onto Tru-Gard™ Barrier.



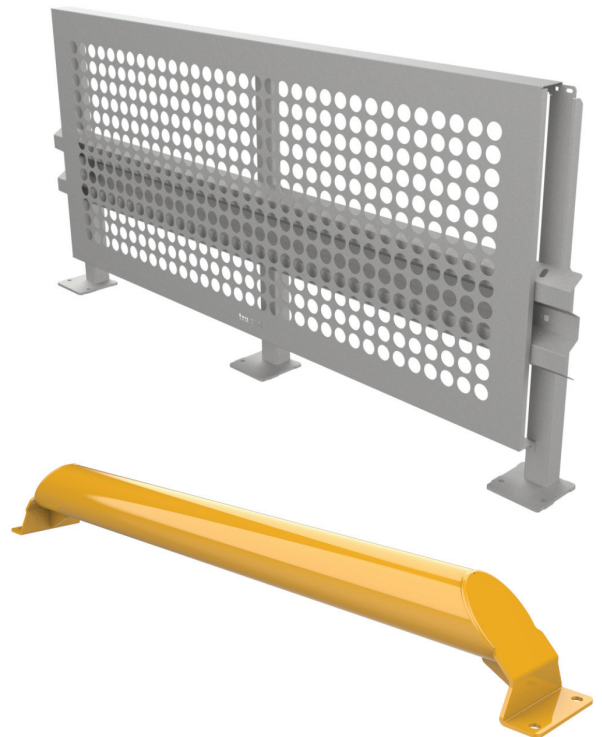
Tru-Gard™ making workplaces safer

## We've got some new products available – check out our Anti-Climb and Wheel Guides

Take a look at the latest Tru-Gard™ products we've got on offer. Our R&D team have been working hard to bring these highly sought-after options to market in 2022. They're available now from our manufacturing plant, so get in touch with our consultants to discuss your requirements.

### Tru-Gard™ Anti-Climb Barrier

- Complete modular system of components
- Specialised support posts 1115mmH
- Tru-Gard™ barrier rail 2400mmL
- Custom-designed anti-climb 2mm steel screens
- Non-grip surface with 48mm aeration and visibility slots
- Compliant with anti-climb building codes
- Hot dip galvanised finish
- Safety yellow components available by request
- All fixings included



### Tru-Gard™ Wheel Guides

- Ground-mounted vehicle parameters
- 115mmØ steel tubes on raised mounts
- 170mmH x 1395mmL
- Safety yellow over galvanised finish
- All fixings included

## Tru-Gard™ shipment off to Aus – we're maintaining supply despite erratic shipping schedules

We continue to supply our Australian neighbours with quality NZ-made safety products, although getting there isn't always easy in the current conditions!

Like all New Zealand exporters, we're facing significant challenges with international supply chains resulting from shipping disruptions, container shortages and considerable cost increases. The consequences of an unexpected surge in global consumer spending have led to record-breaking demand for shipping services far beyond the available capacity. Furthermore, due to port congestion in the main global shipping hubs, New Zealand's shipping schedule reliability has plunged to a historic low of 6%, down from more than 80% before the pandemic\*. This means that only 6% of ships are arriving at New Zealand ports on time. The issues are compounded when services skip their scheduled stops along New Zealand's coast to make up for lost time, not to mention the pressure from shipping companies chasing higher paying business elsewhere.

Nevertheless, we persist with timely production of Tru-Gard™ despite the constraints, and even though delivery can take a little longer in the current environment, we continue our quest to make workplaces safer, as fast as we can.



\*NZCSA Cold Facts, December 2021

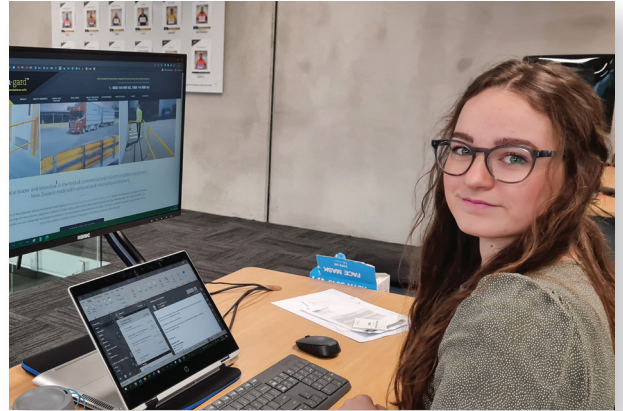


Tru-Gard™ making workplaces safer

## Have you met Saffron Taylor – our amazing, all-round whizz kid!

Saffron started with Tru-Bilt in January 2021 in a marketing role, putting together videos and visual content to showcase our work in the safety industry. We all know how important it is to have a youngster present when we run into difficulty with technology, so Saffron's youthful knowledge of computers and various devices brought a breath of fresh air to our business. There's no resting on her laurels though, this little lady likes to get her hands dirty! Saffron now splits her working week between a computer desk in the office and a new hands-on role in the workshop. Whether she's welding steel, sorting bolts, packing orders for dispatch or helping out with the powder-coating, she really feels at home getting the 'hard work' done.

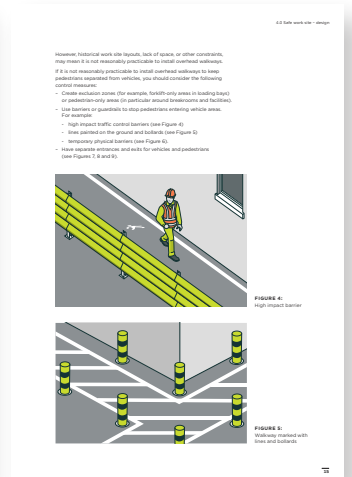
Unsurprisingly, Saffron has become quite the popular team member around the workplace, with a willingness to give anything a go and help out everybody she can, always with a friendly smile and a great sense of humour. And tiny though she is, (no taller than a Tru-Gard™ XL Bollard), she can maneuver some of our heaviest products around the workshop. In the predominantly male-occupied industry of steel production, it's a fine thing to see someone proving that "girls can do anything". Way to go Saffron, keep up the awesome work!



## Looking for good traffic safety advice? You don't have to take our word for it!

Have you seen the current [WorkSafe guideline](#) for managing work site traffic? This document is well worth a read for those putting together an in-house traffic management plan! It contains some excellent advice, including methods for identifying hazards and suggestions on how to plan vehicle routes and pedestrian safety zones.

Our team would be more than happy to go over any aspect of this guideline with you and explain how Tru-Gard™ can help to manage risks and keep pedestrians and vehicles apart. We manufacture and install many of the safety products discussed in this brochure.



## We are now on Instagram – please give us some

We've recently launched an Instagram profile and need your help to build our following! Head over to our page and get on board: <https://www.instagram.com/trubiltindustries/>

